



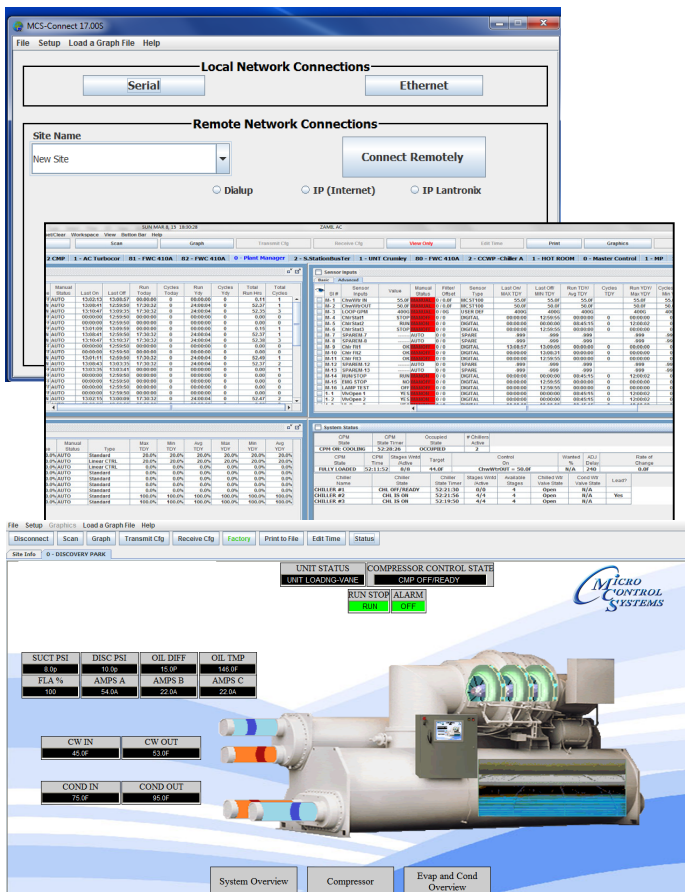
# MCS-CONNECT Description & Product Features

## Product Features

- Java application runs on Windows/Linux
- Local communication @ 19200 baud
- Local Ethernet @ 10/100 MBPS
- Remote communication via phone or Internet
- Email/Test Message alarm alerts
- Auto Print to file on alarms
- Daily Scheduled Print to Files
- Temperature and PSI Conversion Wizard
- Extended History File Save - MCS-MAGNUM -1008 Samples  
MCS-MICROMAG -300 Samples
- Interactive P/T Chart
- Lookup Tables
- Hide / Show Applicable Data
- Diagnostic Save/Auto-Send
- Window/Grids auto sizing based on screen resolution
- Customizable Workspace saving allow easy recall of window position & sizing
- Live Graphs can be viewed in custom workspace with status screen
- Algorithm control states display
- Static & dynamic graphing / trending data
- Alarm retrieval & handling - these items can be printed and saved to PC for analysis and backup
- Manual / Auto mode control
- Setpoint modification
- Schedule modification
- Multiple authorization levels for security
- Runtime / Cycle count information
- Transmit / Receive configuration in as fast as 10 seconds
- Sensor Diagnostics
- Graphic Interface Sub List
  1. Customized to application
  2. User Customizable Gauges
  3. State Based Color and Image changes
  4. Animated device—pump rotating, comp moving, fan spin, etc.
  5. Easy view and access via graphic interface

## System Requirements

- PC with a Pentium-class processor
- Windows 7 or later operating system or Linux operating system
- Minimum 1GB of RAM
- Minimum 4GB Drive
- 14.4k baud modem or higher for remote communications
- 1280 x 800 pixel or higher display



MCS-CONNECT for MCS Controllers

## Description

MCS-CONNECT software is part of the MCS Support System. Its purpose is to provide both local and remote communication for MCS micro controllers either by themselves or as part of a network.

MCS-CONNECT allows the user to monitor the status of the micro controller in real time and, with proper authorization, changes can be made to the system. In as fast as 10 seconds configuration files can be transmitted to or received from a MCS micro controller.

Another powerful feature of MCS-CONNECT is its ability to graph event history. Since MCS Controllers automatically perform history logging, the user can select which inputs or outputs to graph and view the results either in real time or over a user selectable period of time.

Updates for MCS-CONNECT can be downloaded directly from the MCS website under "Support", PC Software.

The program is available as Microsoft Windows based software or as Linux based software.